

XDS5 AND XDS10 SCROLL PUMPS



The XDS pumps are an innovative new design which use a patented bearing shield to isolate the vacuum environment from all forms of lubricant not only making it totally dry but also protecting the bearing from any process gases. Adjustable gas ballast allows vapor to be handled and opens up the range of applications to many that were previously unsuited to scroll pumps.

The XDS-C range are designed for pumping condensable vapors, and use materials selected for a wide range of laboratory wet chemistry applications.

APPLICATIONS

XDS

- Scanning electron microscopes
- Ion implanters (beamline and end stations)
- General clean pumping applications
- Sputtering
- Turbo pump backing

XDS-C

- Gel drying
- Rotary evaporation
- Centrifugal concentration
- Vacuum ovens
- Glove boxes

TECHNICAL DATA

	XDS5/5C	XDS10/10C
Displacement		
50 Hz operation	5.7 m ³ h ⁻¹ / 3.4 ft ³ min ⁻¹	11.3 m ³ h ⁻¹ / 6.7 ft ³ min ⁻¹
60 Hz operation	6.7 m ³ h ⁻¹ / 4.0 ft ³ min ⁻¹	13.4 m ³ h ⁻¹ / 7.9 ft ³ min ⁻¹
Peak pumping speed		
50 Hz operation	4.8 m ³ h ⁻¹ / 2.8 ft ³ min ⁻¹	9.3 m ³ h ⁻¹ / 4.0 ft ³ min ⁻¹
60 Hz operation	6.0 m ³ h ⁻¹ / 3.5 ft ³ min ⁻¹	11.1 m ³ h ⁻¹ / 6.5 ft ³ min ⁻¹
Ultimate vacuum (total pressure)	7 x 10 ⁻² mbar / 5 x 10 ⁻² Torr	
Inlet connection	NW25	
Outlet connection	NW25	
Maximum allowed outlet pressure	1.0 bar gauge	
Maximum allowed inlet and gas ballast pressure	0.5 bar gauge	
Maximum water vapor inlet pressure	50 mbar / 38 Torr	35 mbar / 23 Torr

Maximum water vapor pumping rate

Gas ballast low flow	70 gh ⁻¹
Gas ballast high flow	>200 gh ⁻¹

Motor power

0.3 kW

Enclosure rating

IP44

1-phase 50 Hz

110 V or 220-240 V

1-phase 60 Hz

115-120 V or 230-240 V

3-phase 50 Hz

200-220 V or 380-415 V

3-phase 60 Hz

200-230 V or 460 V

Operating temperature range

5 - 40 °C

Weight

23 kg (51 lb)

24.5 kg (54 lb)

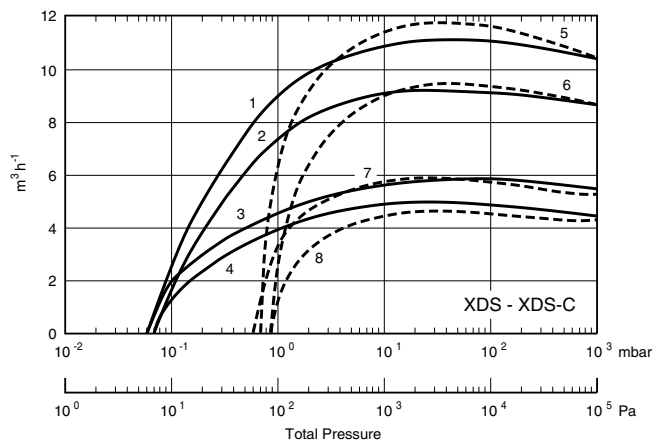
Noise

55 dB (A) @ 50 Hz

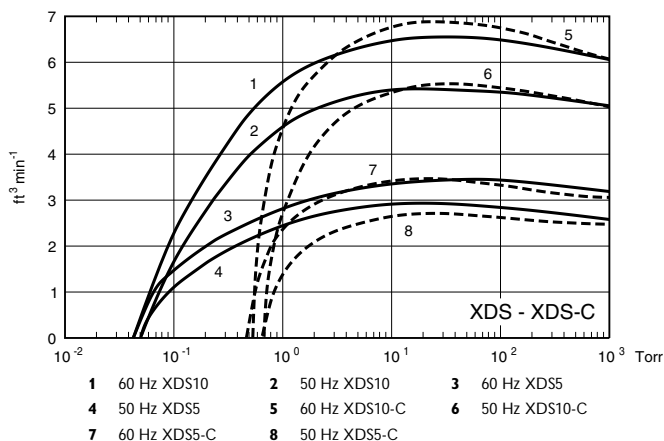
Vibration

<1.5 mms⁻¹ (rms)

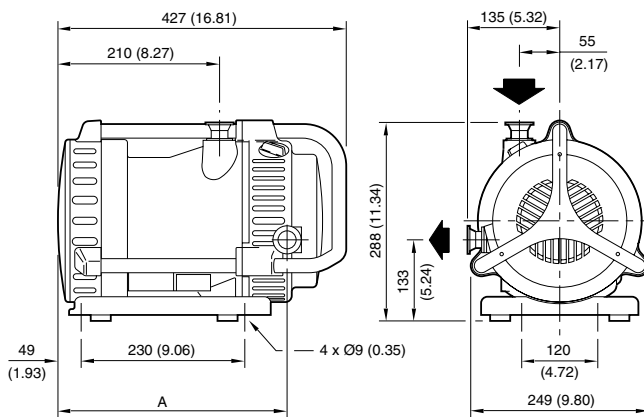
Leak tightness (static)

<10⁻⁶ mbar l s⁻¹

1 60 Hz XDS10	2 50 Hz XDS10	3 60 Hz XDS5
4 50 Hz XDS5	5 60 Hz XDS10-C	6 50 Hz XDS10-C
7 60 Hz XDS5-C	8 50 Hz XDS5-C	



1 60 Hz XDS10	2 50 Hz XDS10	3 60 Hz XDS5
4 50 Hz XDS5	5 60 Hz XDS10-C	6 50 Hz XDS10-C
7 60 Hz XDS5-C	8 50 Hz XDS5-C	



Dimension reference A:

XDS10 = 315 mm

XDS5 = 297 mm

ORDERING INFORMATION	
PRODUCT DESCRIPTION	ORDERING NUMBER
XDS5	
1-phase 115/230 V (set to 115 V)	A724-01-906
1-phase 115/230 V (set to 230 V)	A724-01-903
1-phase 100/200 V (set to 200 V)	A724-01-904
3-phase 200/380/415/460 V (unset)	A724-01-905
XDS5C	
1-phase 115/230 V (set to 115 V)	A725-01-906
1-phase 115/230 V (set to 230 V)	A725-01-903
1-phase 100/200 V (set to 200 V)	A725-01-904
3-phase 200/380/415/460 V (unset)	A725-01-905
XDS10	
1-phase 115/230 V (set to 115 V)	A726-01-906
1-phase 115/230 V (set to 230 V)	A726-01-903
1-phase 100/200 V (set to 200 V)	A726-01-904
3-phase 200/380/415/460 V (unset)	A726-01-905
XDS10C	
1-phase 115/230 V (set to 115 V)	A727-01-906
1-phase 115/230 V (set to 230 V)	A727-01-903
1-phase 100/200 V (set to 200 V)	A727-01-904
3-phase 200/380/415/460 V (unset)	A727-01-905
SPARES	
ORDERING NUMBER	
Tip seal kit	A726-01-805
ACCESSORIES	
ORDERING NUMBER	
Exhaust silencer	A505-97-000
Silencer spares kit	A505-97-800
2 m electrical supply cable with IEC socket	A505-07-000

For other electrical supply cables, see page 33.